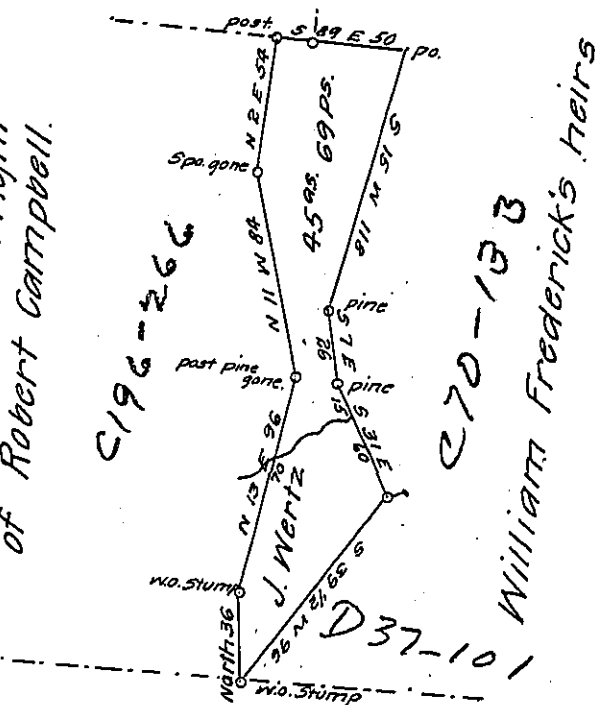


Patrick Haney

Jacob Wertz in right of Robert Campbell.



William Frederick's heirs

Wm. Gilliom in right of Jas. Elliott

Situate on the waters of Evits Creek in Cumberland valley township Bedford County, containing forty five acres and sixty nine perches and the usual allowance of six per cent for roads &c. Surveyed the 21st July A. D. 1859. In pursuance of a warrant granted to William Fredericks, dated 2nd May 1848, and assigned on the back to Jacob Wertz by Sarah Fredericks the widow of ~~Freder~~ William Fredericks and now in possession of the said Jacob Wertz it appears to be an old improvement: Courses according to a true meridian

Saml. Ketterman. C.S.

To John Rowe Esqr.

S. G.

IN TESTIMONY that the above is a copy of the original remaining on file in the Department of Internal Affairs of Pennsylvania, made conformably to an Act of Assembly approved the 16th day of February, 1833, I have hereunto set my Hand and caused the Seal of said Department to be affixed at Harrisburg, this first day of November 1907.

Henry Howard
Secretary of Internal Affairs.